

Specification-Dock Station-8units

SOP-A9

Police camera docking station is the latest charging and data uploading device, which can connect up to 10 cameras, via USB2.0 port, compatible with the most of police body cameras in the market. In addition to total power of docking reach 120 W, each port can provide up to 2.0A of self-adaption current, according to the connected devices. Users only need an office computer, without cumbersome wiring. It features multi-device data collection and charging.

Police camera docking station is the latest charging and data uploading device, which can connect up to 10 cameras, via USB2.0 port, compatible with the most of police body cameras in the market. In addition to total power of docking reach 120 W, each port can provide up to 2.0A of self-adaption current, according to the connected devices. Users only need an office computer, without cumbersome wiring.

It features multi-device data collection and charging.



Main Functions:

- 1) Password Login
- 2) File Browsing
- 3) Device info setting
- 4) Change Password

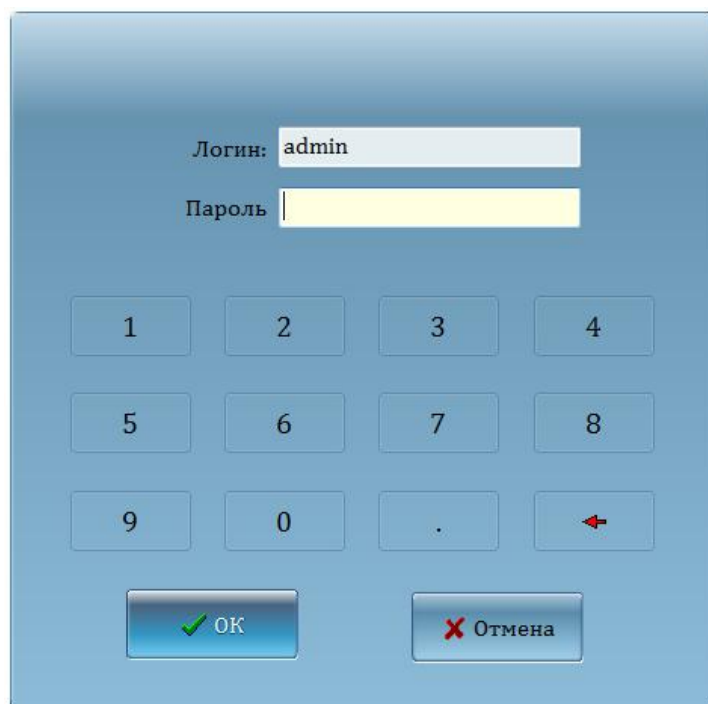
5) Data uploading automatically

Features:

- Ø All-metal structure, it is durable and tough ;
- Ø Fully compatible with USB2.0 and USB3.0, support hot-swappable, compatible with most of body worn cameras.
- Ø With dual protection on the output, it can protect your connected device from overloading, support overload voltage and instantaneous current protection; each port provides up to 2.0A current.
- Ø Enforcement recorder clip can be fixed at 8 slots, which are neatly arranged.
- Ø USB connector, handsome and reliable;
- Ø Docking has four pads can be stably placed on any flat surface.
- Ø Docking station has six vents, internal motherboard is equipped with a fan. To prevent from downtime due to over heat.
- Ø Equipped with a switch, which can be directly turn off 8 USB power.
- Ø Support win.10, win.8, win 8.1, Win7(32bit,64bit), Window Vista, Windows XP Professional / Home Edition Window98 / ME /2000 Professional /and others;
- Ø Weight: 7Kg;
- Ø Size:58cmx30cmx12cm;

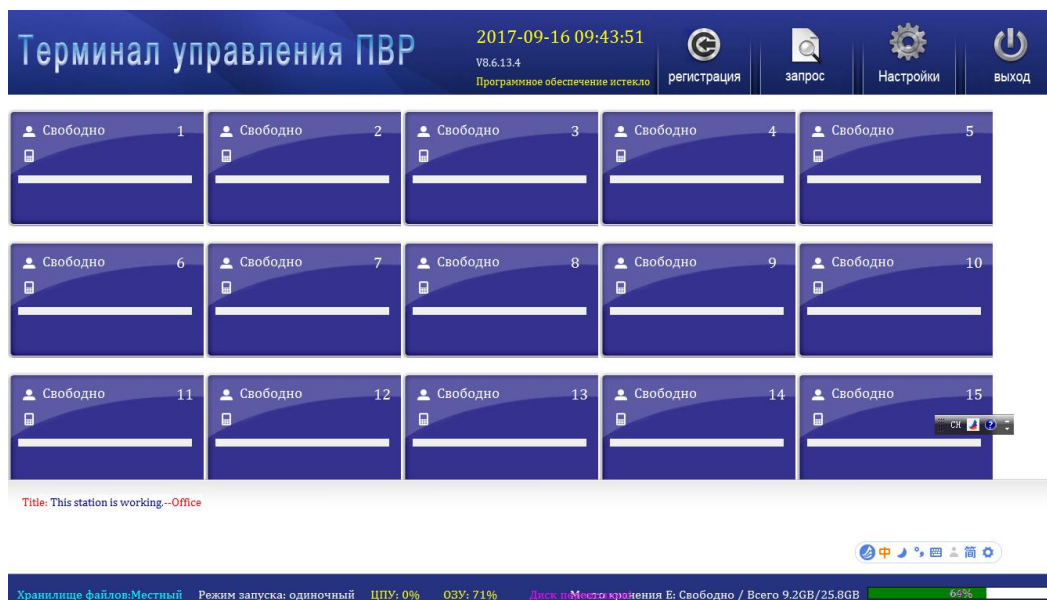
Menu:

Login Menu:



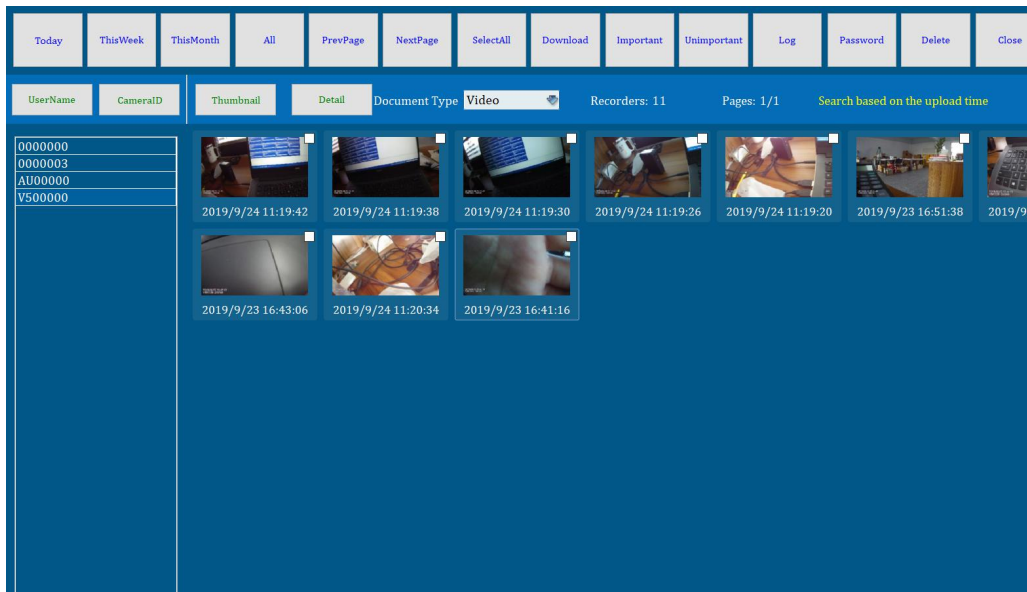
The login menu is a blue rectangular window. It features two input fields: 'Логин:' (Login) with the text 'admin' and 'Пароль' (Password) which is currently empty. Below the input fields is a numeric keypad with buttons for digits 1-9, 0, a decimal point, and a back arrow. At the bottom of the window are two buttons: 'OK' with a green checkmark icon and 'Отмена' (Cancel) with a red 'X' icon.

Uploading Menu: (English/Russian/Chinese/Portuguese..)

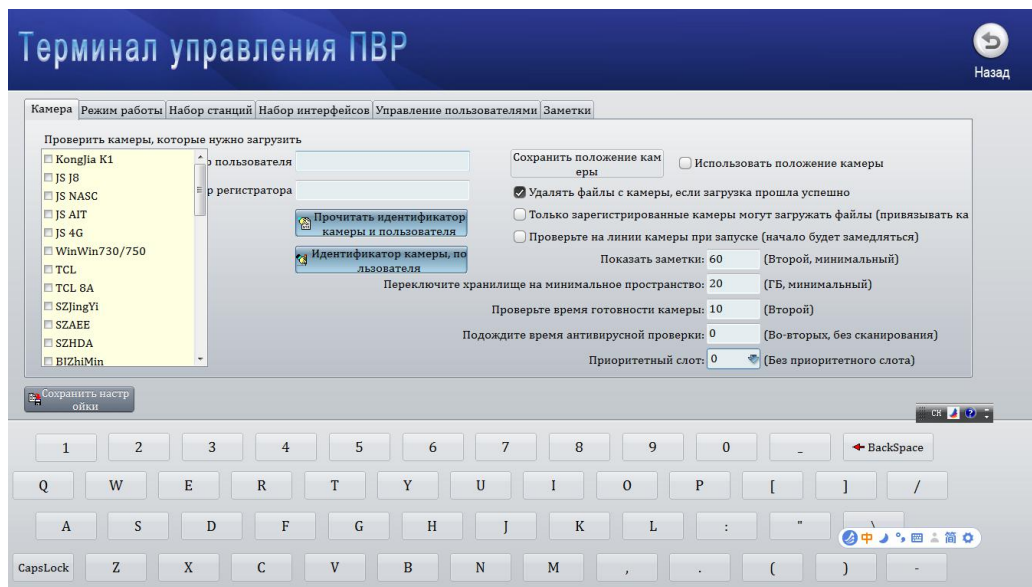


The uploading menu is a complex interface with a dark blue header. The header contains the title 'Терминал управления ПВР' (PVR Control Terminal) on the left, the date and time '2017-09-16 09:43:51' and version 'v8.6.13.4' in the center, and navigation icons for 'регистрация' (registration), 'запрос' (request), 'Настройки' (Settings), and 'выход' (exit) on the right. The main area consists of a 3x5 grid of 15 terminal slots, each labeled 'Свободно' (Free) and numbered 1 through 15. A status bar at the bottom displays system information: 'Хранилище файлов: Местный' (File storage: Local), 'Режим запуска: одиночный' (Startup mode: single), 'ЦПУ: 0%' (CPU: 0%), 'ОЗУ: 71%' (RAM: 71%), and 'Диск в месте крепления E: Свободно / Всего 9.2GB/25.8GB' (Disk in drive E: Free / Total 9.2GB/25.8GB) with a 66% progress indicator.

File Browser Menu: (English/Russian/Chinese/Portuguese..)



Settings: (English/Russian/Chinese/Portuguese..)



Accessories:

1. Dock Station x 1
2. USB cable to Computer x 1
3. Power Cable x 1
4. User Manual x1
5. Driver disc x 1